

Seeing Re-entry Through the Lens of Recovery Ministry

**Dr. Mark Vander Meer, D. Min,
C.P.C, R.C.
Executive Director**

**Rev. Greg Chandler, B.A., R.C.
Director of Operations**



JOIN US LIVE

OUR BROADCAST SCHEDULE

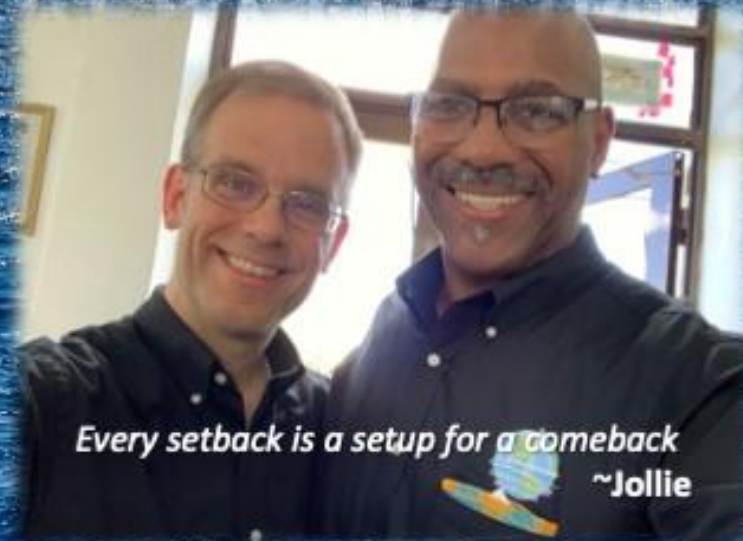


CRIRECOVERY.ONLINE.CHURCH

FRIDAY

6:45 pm

Friday Recovery



Every setback is a setup for a comeback
~Jollie

SUNDAY

12:00 pm

Sunday Recovery



**1. Define What Mental
Illness is And What It is
NOT**

**2. Role of The Church in Re-
entry & Recovery Ministry**

**3. Mental Health, Recovery
Ministry And The Church**

**4. Relapse Prevention & The
Returning Citizen**

**5. Recovery Ministry &
Re-entry**



Chicago Bill





Mental Illness:

The medical [& spiritual] conditions that disrupt a person's thinking, feeling, mood, ability to relate to others and daily functioning.



The Role of the Church

- Religion has influenced philosophies of punishment and rehabilitation.
- “The church” has helped direct the course of modern corrections.
- For more than a century, the church provided spiritual guidance and support to prisoners.
- The church has also provided, and continues to provide, a wide- range of services.



The Role of the Church

- Food, shelter and clothing. education, employment, and housing assistance. crime prevention, substance abuse counseling and treatment, and victim assistance.
- Services provided via the church are vital to increasing public safety.
- In many instances, local churches provide the aforementioned services in poor, urban environs that are disproportionately impacted by incarceration. *



*Source: U.S. Department of Health and Human Services



ALONE

Millions of people are affected by mental illness each year. Across the country, many people just like you work, perform, create, compete, laugh, love and inspire every day.



1 in 5 U.S. adults experience mental illness

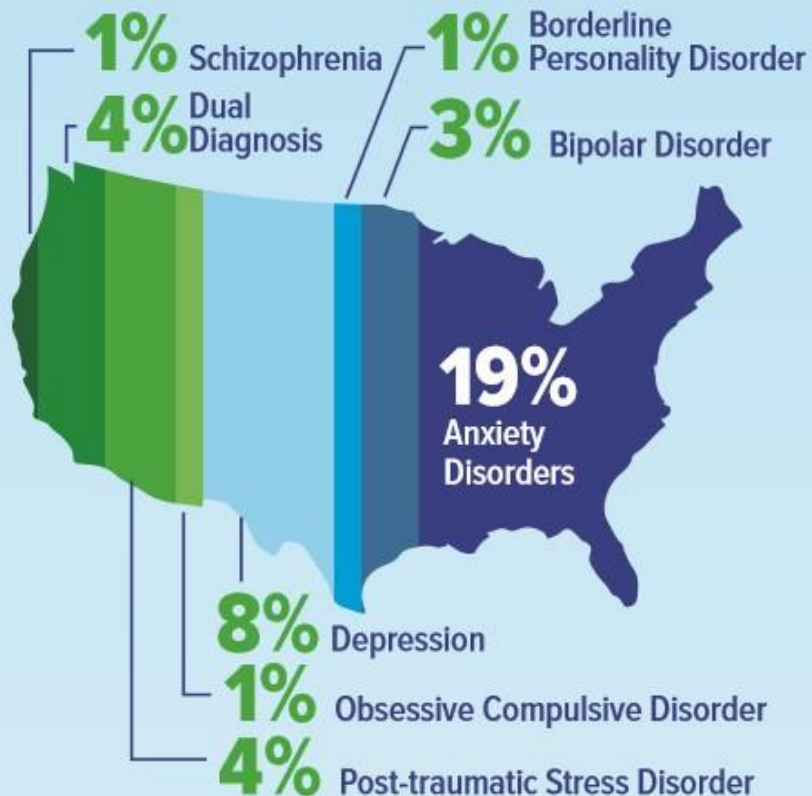
1 in 20

1 in 20 U.S. adults experience serious mental illness

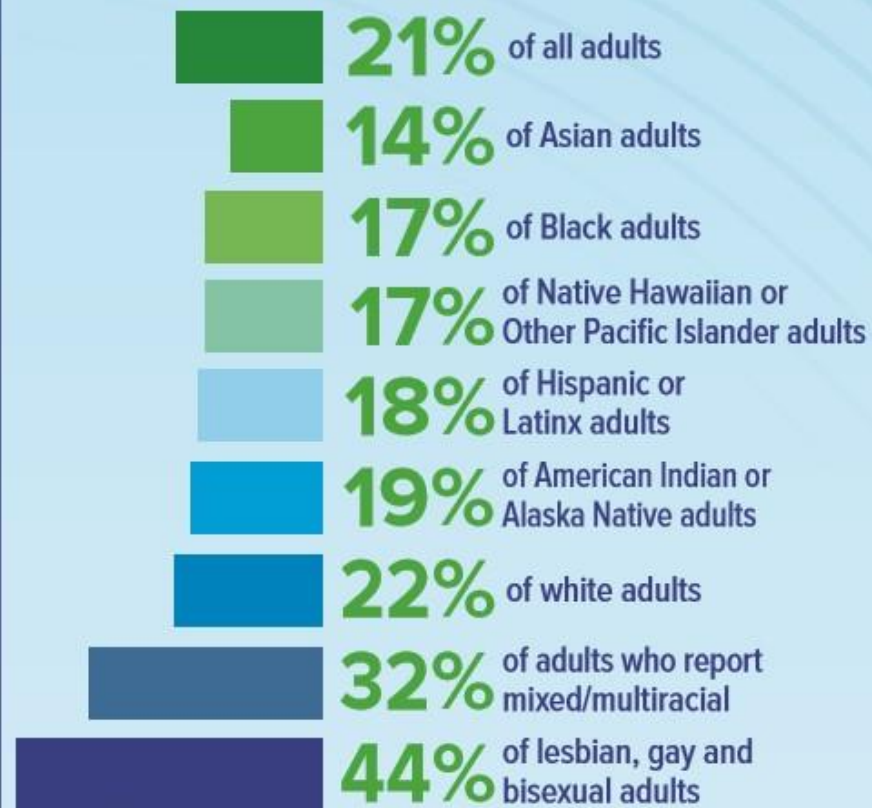
17%

of youth (6-17 years) experience a mental health disorder

12 MONTH PREVALENCE OF COMMON MENTAL ILLNESSES (ALL U.S. ADULTS)



12 MONTH PREVALENCE OF ANY MENTAL ILLNESS (ALL U.S. ADULTS)



- **Re-entry = Recovery Ministry**
- **Recovery = Mental Health Ministry**
- **Mental Health Ministry = Relapse Prevention**



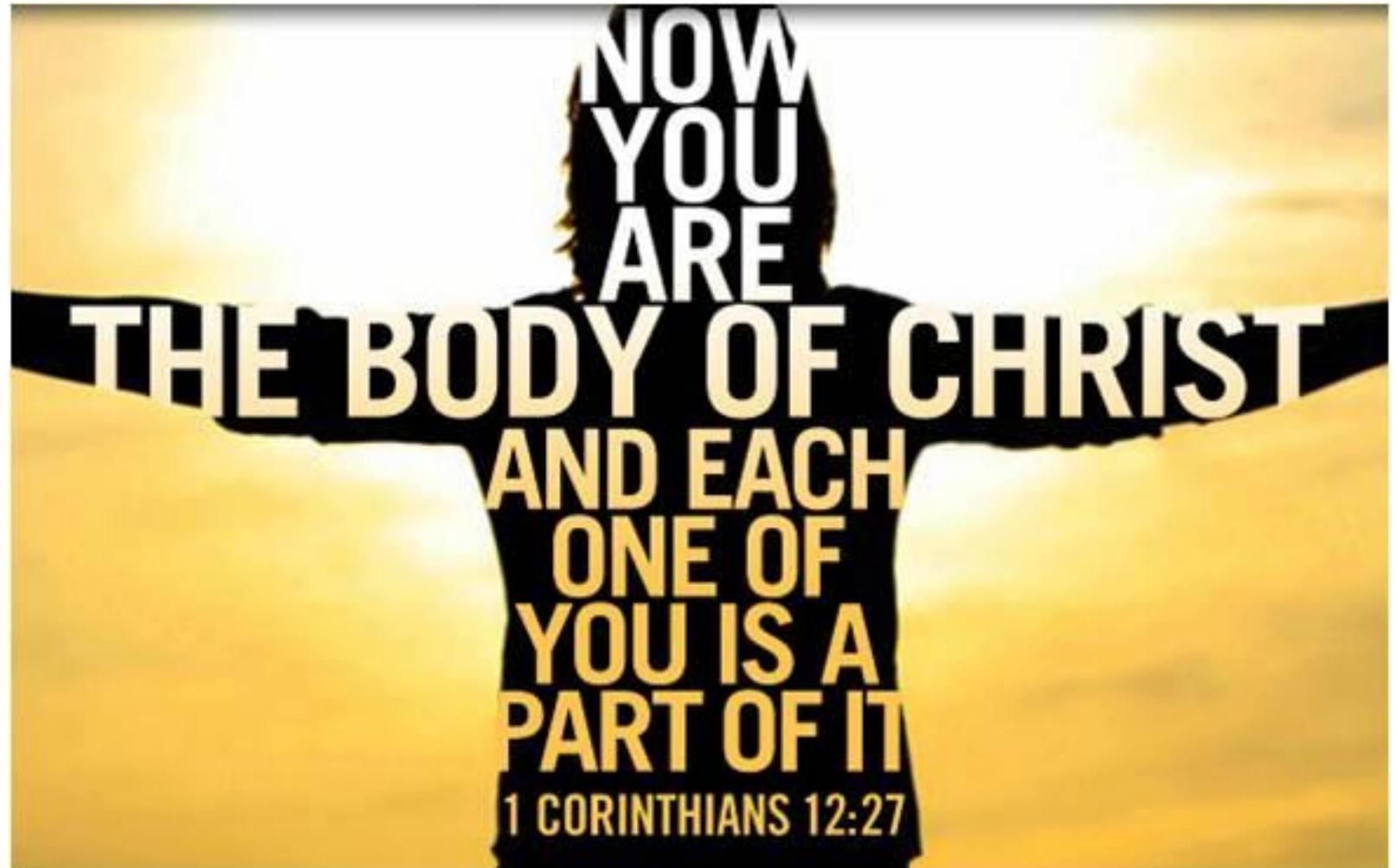
Relapse Prevention

- Signs, Triggers, & Cues
- People, Places & Things
- Tools & Support

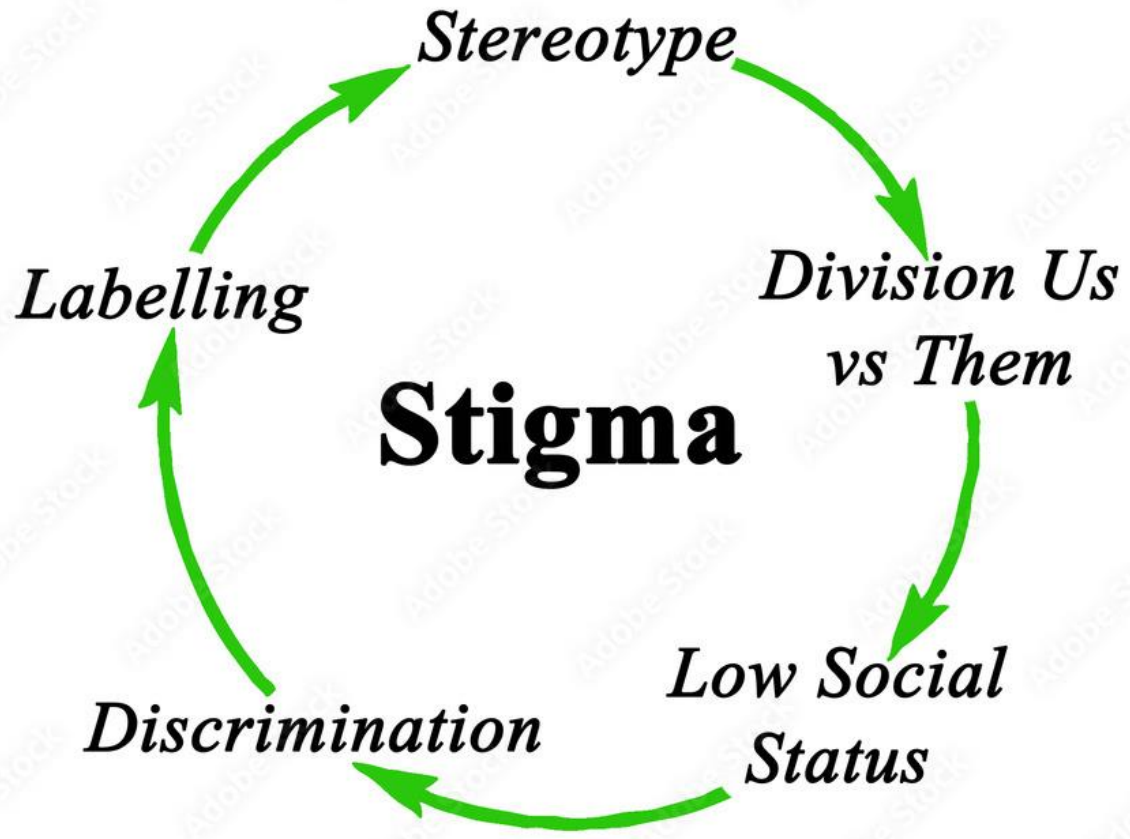


The Church

- God's People
- The Body of Christ
- Imago Dei



Stigma & Re-entry





Recovery Ministry Structure

Assess & Process

Assume
nothing



Create a
safe space



Ask
good questions

Recovery Curriculum



The banner for Christian Recovery International features a dark blue background with a glowing blue globe. The text 'Christian Recovery International' is written in white, bold letters on the left side.

Christian Recovery International

Helping the Christian community become a safe place for people recovering from addiction, abuse, or trauma.

The LIFERECOVERY logo features the word 'LIFERECOVERY' in a bold, sans-serif font. The 'O' in 'RECO' is replaced by a circular icon containing a silhouette of a person with arms raised. The text is colored in orange and dark blue.

LIFERECOVERY